

TRI-AD Introduction

2nd NDS Public Conference
Online on September 24, 2020

Naoya Kuwata
Lead of Product Strategy (Mapping)
Toyota Research Institute - Advanced Development, Inc.





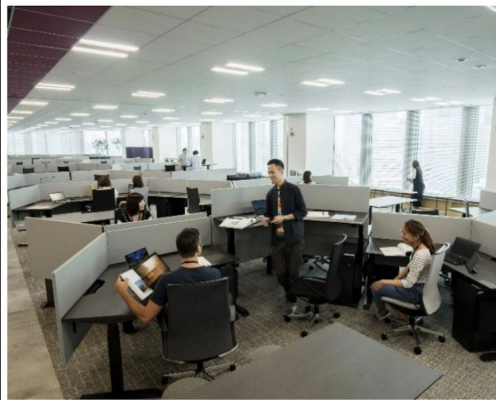
TRI-AD

Toyota Research Institute
Advanced Development, Inc.

Company established March 2018

Software for Automated Driving / Advanced Safety

Joint venture of Toyota, Aisin, and Denso

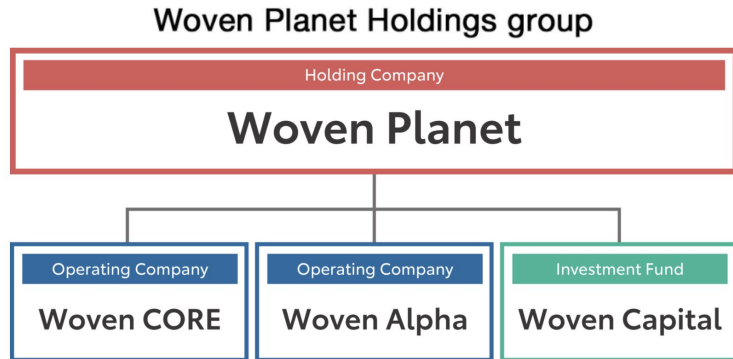


For details, please visit us;

<https://www.tri-ad.global/about/index>

JULY 28, 2020

Toyota Research Institute - Advanced Development, Inc. announces it will expand and improve its operations by forming Woven Planet Holdings and two new operating companies, Woven CORE and Woven Alpha



For details, please visit us;

<https://www.tri-ad.global/news/20200728>

<https://toyotatimes.jp/en/insidetoyota/088.html>



Automated Mapping Platform (AMP)

AMP open software platform:

- Provides developers easy, open and sustainable access to High Definition (HD) maps from across industries and fleets.
- Deployed applications contribute anonymized sensor data to the platform

AMP Advantages:

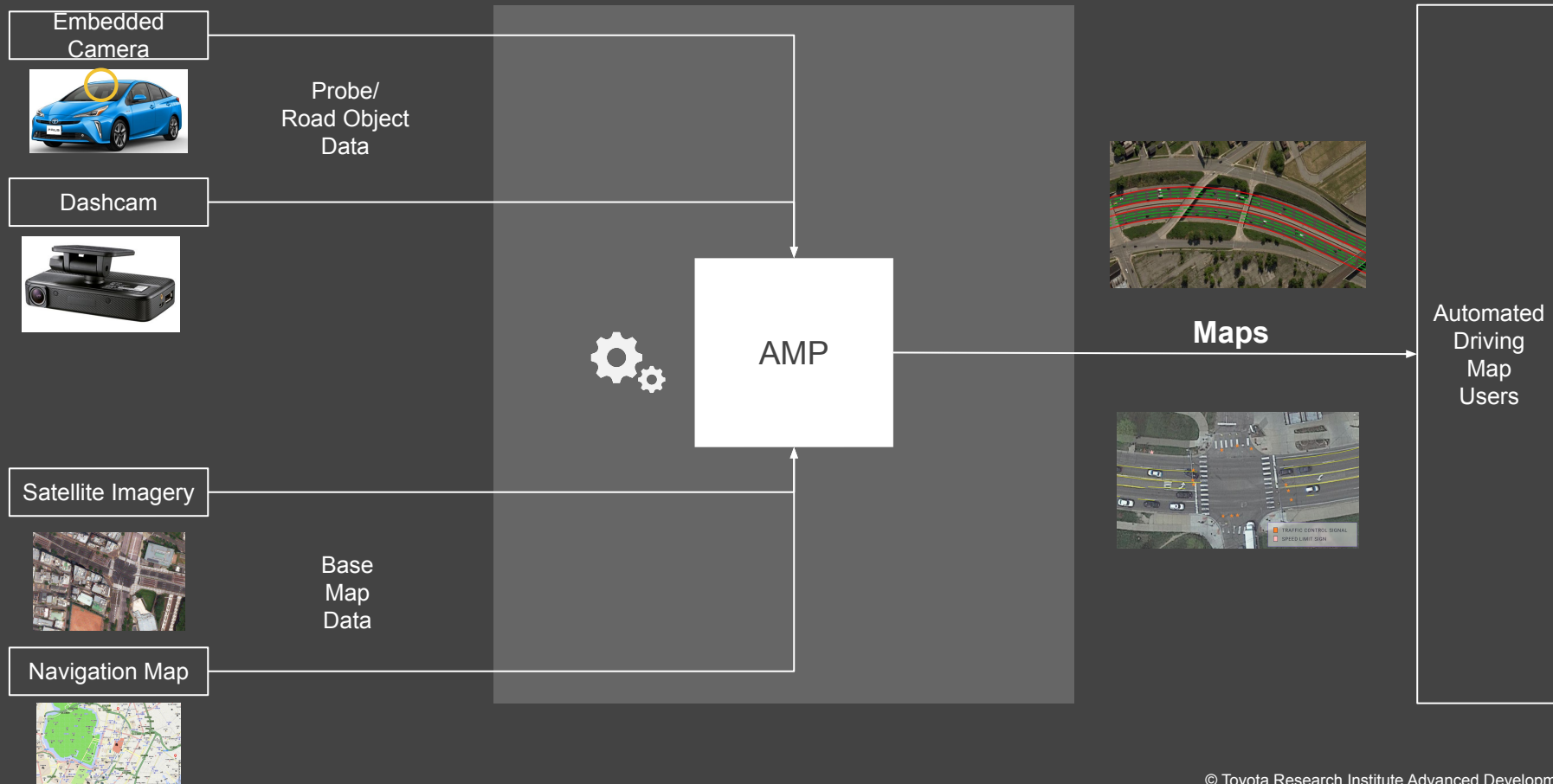
- Provides both accuracy and scale
- Allow any developer to automatically generate HD map data
- Leverage cloud-based map technology and code deployment.
- Easy-to-use Application Programming Interfaces (APIs) for HD maps.
- Leverage satellite imagery and Toyota's enormous fleet of vehicles to continuously update the map in near real-time.



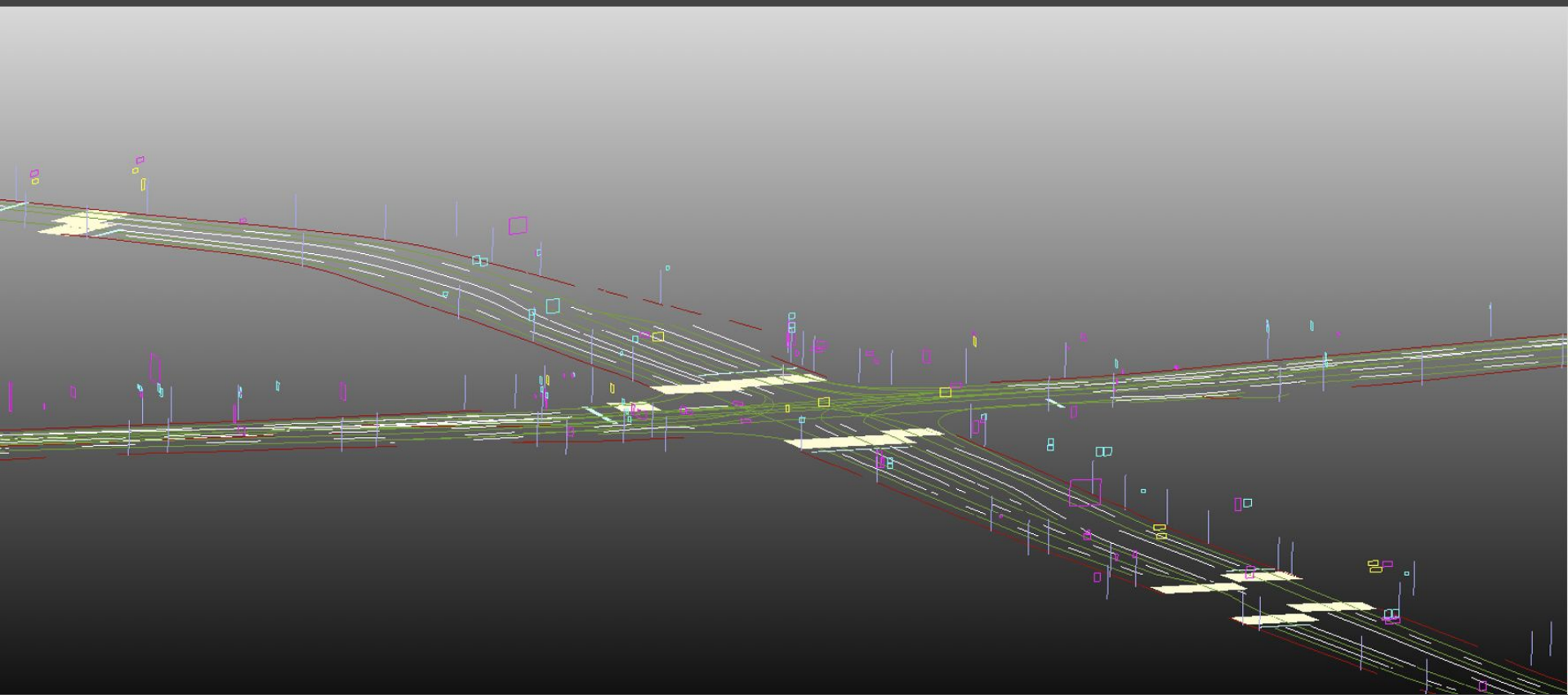
For details, please visit us;

<https://www.tri-ad.global/areas-of-focus/automated-mapping-platform>

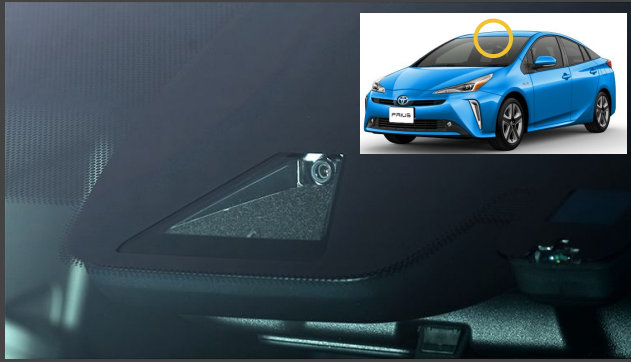
Automated Mapping Platform (AMP) Overview



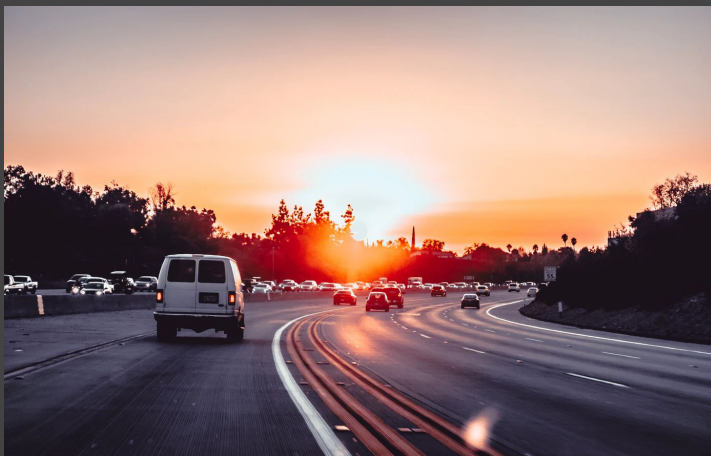
AMP Map Image (Example)



AMP Key Differentiator #1: Automated Driving Maps using Imperfect Crowdsourced Data



AMP Key Differentiator #2: Highways and Surface Roads



+



AMP Development In Progress



Mar 17, 2020

TRI-AD and DMP kick off HD Map update PoC from April 2020

On March 17th, 2020, Toyota Research Institute - Advanced Development, Inc. (TRI-AD) and Dynamic Map Platform Co., Ltd. (DMP) have agreed to a partnership to build a proof of concept (PoC) applying the technologies of both companies starting April 2020.

[Read More](#)

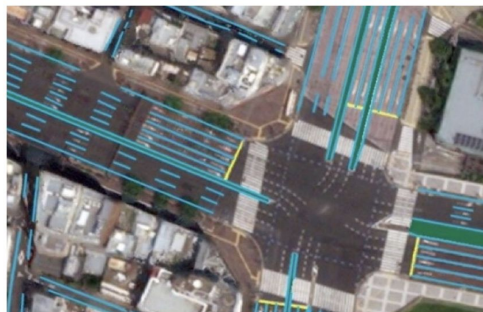


Mar 10, 2020

TRI-AD enables successful creation of HD maps for automated driving on surface roads

Toyota Research Institute-Advanced Development, Inc. (TRI-AD) has successfully completed proof of concepts (PoC) demonstrating high definition (HD) map building for surface roads with relative accuracy of less than 50 centimeters.

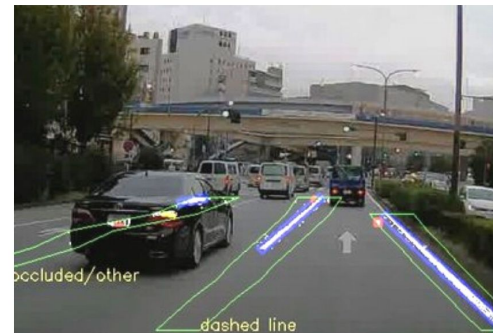
[Read More](#)



April 25, 2019

TRI-AD, Maxar Technologies and NTT DATA collaborate to build high-definition maps for autonomous vehicles from space

[Read more](#)



February 28, 2019

TRI-AD and CARMERA team up to build high definition maps for automated vehicles using camera data

[Read more](#)

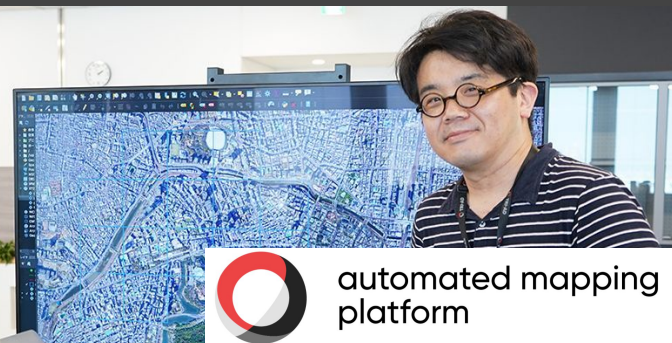
For details, please click 'Read More'

AMP needs Partnership Expansion



For details, please contact naoya.kuwata@tri-ad.global

TRI-AD
OPEN POSITIONS



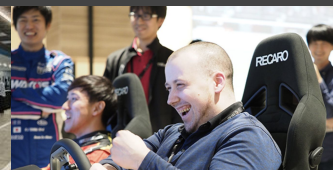
automated mapping
platform

Thank you

Please visit [here](#) and join us!



33rd
Nikkei New Office Awards



TRI-AD

Toyota Research Institute
Advanced Development, Inc.